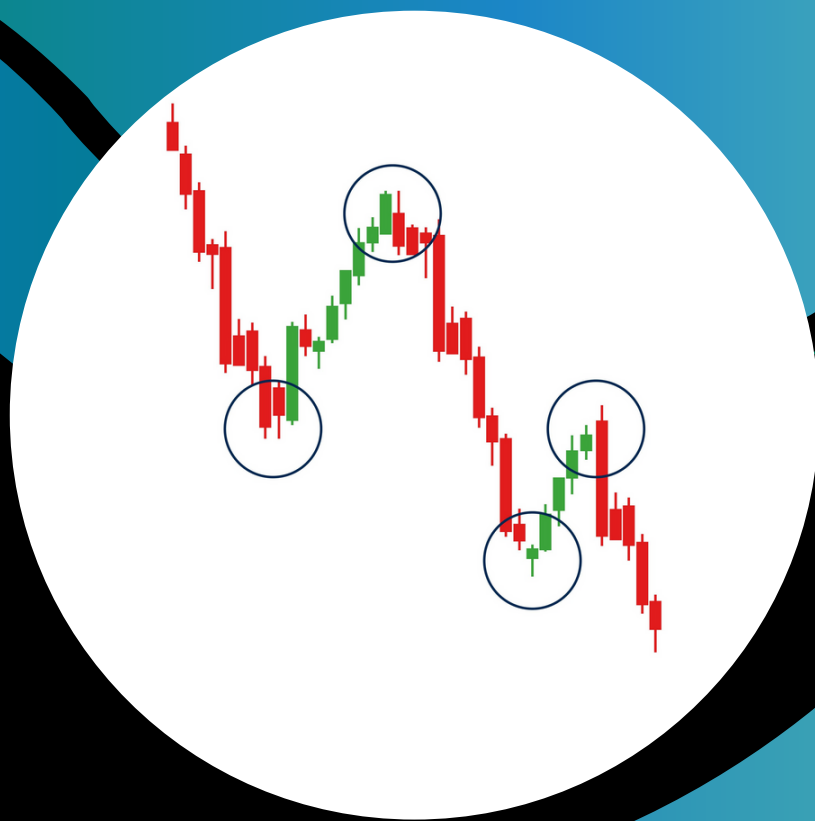


THE NOMAD TRADER



POWERFUL

PRICE

ACTION

EA

MANUAL

WELCOME TO YOUR GUIDE

Powerful Price Action EA

Input explanation

maxSpread-- (i.e.=20.0) Here you can tell the EA the maximum spread when it can open a trade. If the spread is above that X number the EA won't open any trade.

Section 1:

Long (Buy) Trade Money Management Settings

Section 1

VolumeRisk-- (e.g.=2.5) Here you can tell the EA if the trade hits the stoploss, the loss of the trade will be approximately the X percent of your equity.

VolumeUpperLimit-- (e.g.=0.5) Here you can tell the EA the maximum lot size it can open trade with.

StopLossPips-- (e.g.=132) Here you can tell the EA the maximum loss in pips where it closes the trade.

TakeProfitPips--

(e.g.=143)

Here you can tell the EA the profit in pips where it closes the trade.

Section 2:

Short(Sell) Trade Money Management Settings

VolumeRisk--

(e.g.=2.5)

Here you can tell the EA if the trade hits the stoploss, the loss of the trade will be approximately the X percent of your equity.

VolumeUpperLimit--

(e.g.=0.5)

Here you can tell the EA the maximum lot size it can open trade with.

StopLossPips--

(e.g.=132)

Here you can tell the EA the maximum loss in pips where it closes the trade.

TakeProfitPips--

(e.g.=200)

Here you can tell the EA the profit in pips where it closes the trade.

Section 2

Section 3:

Daily Trading Hours For Buy Trades

Section 3

TimeStartHour--

(value: 1-23)

Here you can tell the EA when to start buy trades in a day.

TimeStartMinute--

(value: 1-59)

TimeEndHour--

(value: 1-23)

Here you can tell the EA when to stop buy trades in a day.

TimeEndMinute--

(value: 1-59)



Section 3:

Daily Trading Hours For **Sell** Trades

Section 4

TimeStartHour--
(value: 1-23)

Here you can tell the EA when to start sell trades in a day.

TimeStartMinute--
(value: 1-59)

TimeEndHour--
(value: 1-23)

Here you can tell the EA when to stop sell trades in a day.

TimeEndMinute--
(value: 1-59)

Section 5:

Minimum minutes before the trade can be closed by dynamic exit (BUY Trades)

OrderMinutes-- Here you can tell the EA how many minutes it must wait before it activates the dynamic exit to scan the market for exit possibilities. Throughout this time the trades can only be closed by the fixed SL/TP.
(e.g.=1000)

Section 6:

Minimum minutes before the trade can be closed by dynamic exit (SELL Trades)

OrderMinutes-- Here you can tell the EA how many minutes it must wait before it activates the dynamic exit to scan the market for exit possibilities. Throughout this time the trades can only be closed by the fixed SL/TP.
(e.g.=1000)

Advanced Money Management/ Prop Trading Settings

Section 7:

Days when you want the EA to close the trades

Activate-- (value: true/false) You can activate the daily close feature of the EA by setting this parameter to *true*.

Monday-Friday-- (value: true/false) Here you can tell the EA which days it should close all trades. You can specify the certain hour in the next parameter. If the value is set to *true*, the EA will close the trade; if it is set to *false*, the EA will let the trade run overnight.

Section 7

Section 8

Section 8:

Close trades at a certain hour

CertainHour-- Here you can tell the EA the certain hour it should close all trades on the days that were set to *true* in the previous parameter.
(value: 1-23)



Section 9:

Close Max DrowDown

PercentEquity-- (e.g.= 10) If activated, it will close all trades at X percent loss of equity.
To use this feature, you must set **ActivateFeature** (in this section) to *true*.

Section 10:

Max Daily DrowDown

NegativeEquity-- (e.g.= -150) If activated, it will close all trades at X amount loss of money (in your currency) in 24 hours.
To use this feature, you must set **ActivateDailyDDLlimit** (in this section) to *true*.

The Core Strategy For The Set Files



The following parameters (section 11-15) are for the set files. By changing these parameters you change the core strategy of the EA so it won't work correctly.

If you accidentally (or on purpose) changed them and you want to change it back, load the set file again.



If you read the whole manual and you still have questions, feel free to contact me!



@BRobotTrader



intelligentforexrobots@gmail.com

May the pips be with you!

